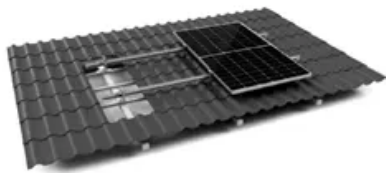


SolarTech Power Solutions

Canadian inverter grid connection standards



TILE ROOF SOLAR MOUNTING SYATEM



STANDING SEAM ROOF SYATEM



ADJUSTABLE TILT FLAT ROOF SYATEM



TRIANGLE FLAT ROOF SYATEM



Overview

How a grid-tie inverter is designed?

The inverter is designed in accordance with the relevant international grid-tie standards along with safety and electromagnetic compatibility requirements. Before delivering to the customer, the inverter has been subjected to several tests to ensure its optimal operation and reliability.

Are Canadian Solar 3 phase inverters safe?

Specifications Canadian Solar three phase inverters integrate DRM and backflow power control function, that could suitable for smart grid requirement. WARNING symbol indicates important safety instructions, which if not correctly followed, could result in serious injury or death.

What size wire should a Canadian Solar inverter use?

If the wire is longer than 20m, it's recommended to use 25-35mm cable. Refer to local electrical codes for wire sizing. Canadian Solar three phase inverters integrate neutral connection point. However, with or without neutral connected won't affect the normal operation of inverter itself.

Do Canadian Solar three phase inverters integrate neutral connection point?

Canadian Solar three phase inverters integrate neutral connection point. However, with or without neutral connected won't affect the normal operation of inverter itself. Please refer to the local grid requirement for if need neutral cable connected. The ground wire can be connected to the grounding hole on the right side of the inverter heat sink.

Do Canadian Solar inverters have OCPD ratings?

To protect the inverter's AC grid connection conductors, Canadian Solar recommends installing breakers that will protect against overcurrent. The following table defines OCPD ratings for the Canadian Solar Three phase inverters. There are 3 communication terminals for Canadian Solar inverter.

How should a Canadian Solar inverter be installed?

Canadian Solar recommends using a sun shade minimizing direct sunlight when the ambient air temperature around the unit exceeds 104°F/40°C. Nothing should be stored on or placed against the inverter. The visibility of LED status indicator lights and LCD should be considered. Install vertically (+/- 5°) or tilted backward ($\leq 15^\circ$).

Canadian inverter grid connection standards

Contact Us

For catalog requests, pricing, or partnerships, please visit:
<https://zegrzynek.pl>