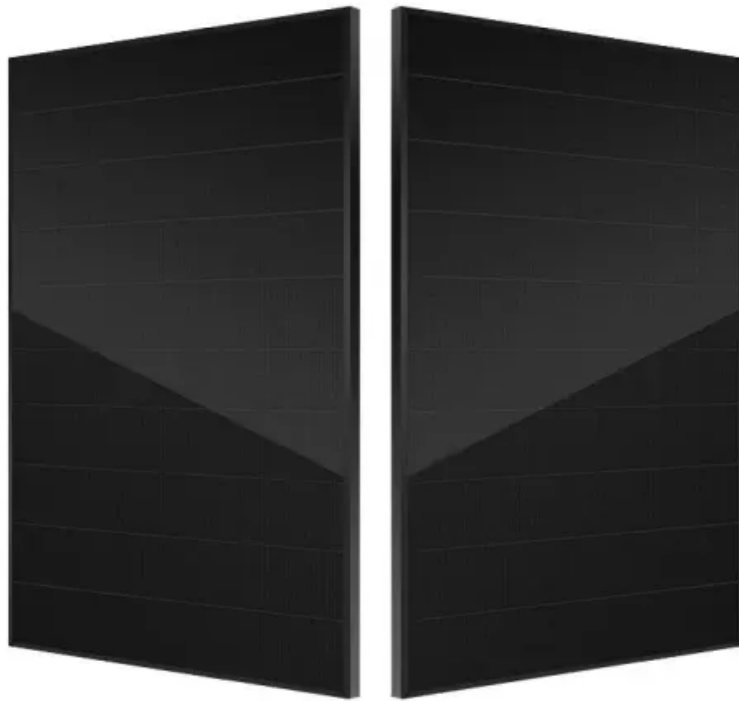


SolarTech Power Solutions

Fiji s largest communication base station wind power



Overview

The Butoni wind farm is operated by the Fiji Electricity Authority (FEA), and feeds directly into the grid for Viti Levu, which has a total capacity of about 140MW, and is operated by the FEA. The farm was commissioned in August 2007.

Fiji s largest communication base station wind power

Contact Us

For catalog requests, pricing, or partnerships, please visit:
<https://zegrzynek.pl>