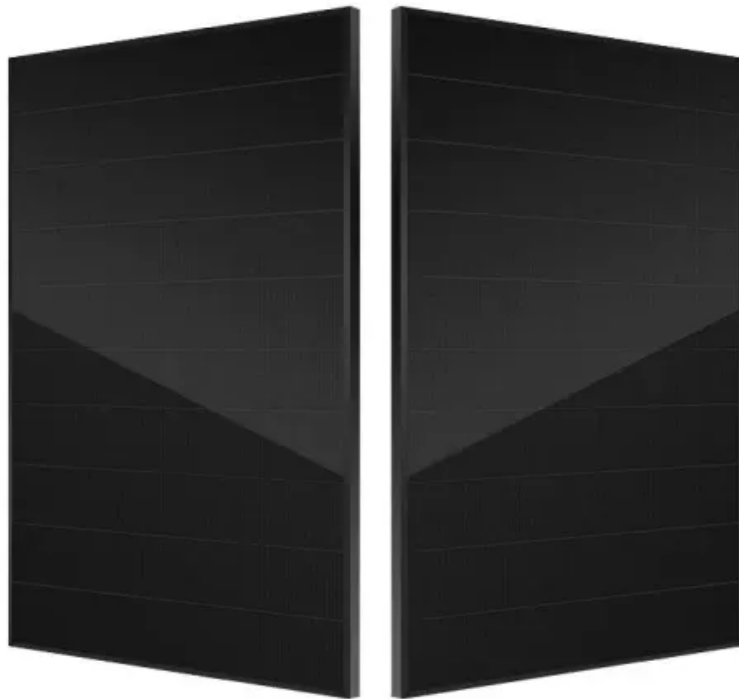


## SolarTech Power Solutions

# Is solar panel power measured in watts



## Overview

---

Solar panel output measures the electricity a solar panel produces from sunlight. It's expressed in watts or kilowatt-hours (kWh) and directly impacts your energy savings.

Solar panel output measures the electricity a solar panel produces from sunlight. It's expressed in watts or kilowatt-hours (kWh) and directly impacts your energy savings.

Wattage refers to the amount of electrical power a solar panel can produce under standard test conditions (STC), which simulate a bright sunny day with optimal solar irradiance ( $1,000 \text{ W/m}^2$ ), a cell temperature of  $25^\circ\text{C}$ , and clean panels. In simpler terms, a panel's wattage rating tells you its.

To determine the wattage of a solar panel, it is essential to assess its specifications carefully. 1. Identify the panel's rated power output, 2. Understand the context of usage conditions, 3. Calculate the actual output under real-world conditions, 4. Consider variations based on panel type and.

Solar panel output measures the electricity a solar panel produces from sunlight. It's expressed in watts or kilowatt-hours (kWh) and directly impacts your energy savings. The more efficient your solar panels are, the more power they will generate for your home, and the higher your return on your.

Divide the average daily wattage usage by the average sunlight hours to measure solar panel wattage. Moreover, panel output efficiency directly impacts watts and the system's overall capacity. Nevertheless, energy usage, sunshine exposure, system capacity, panel types and materials all have an.

A solar panel rating measures the peak output of a solar panel in watts, typically under ideal conditions known as peak sun hours. Solar panel wattage ratings usually indicate the maximum energy produced when exposed to direct sunlight at  $1000\text{W/square meters}$ . However, factors such as temperature.

Voltage, measured in volts (V), is the electrical potential difference between

two points. In simpler terms, it's the force that pushes electric charge through a conductor. Think of voltage as the pressure in a water pipe; the higher the pressure, the more water flows through the pipe. In the.

## Is solar panel power measured in watts

---

## Contact Us

---

For catalog requests, pricing, or partnerships, please visit:  
<https://zegrzynek.pl>