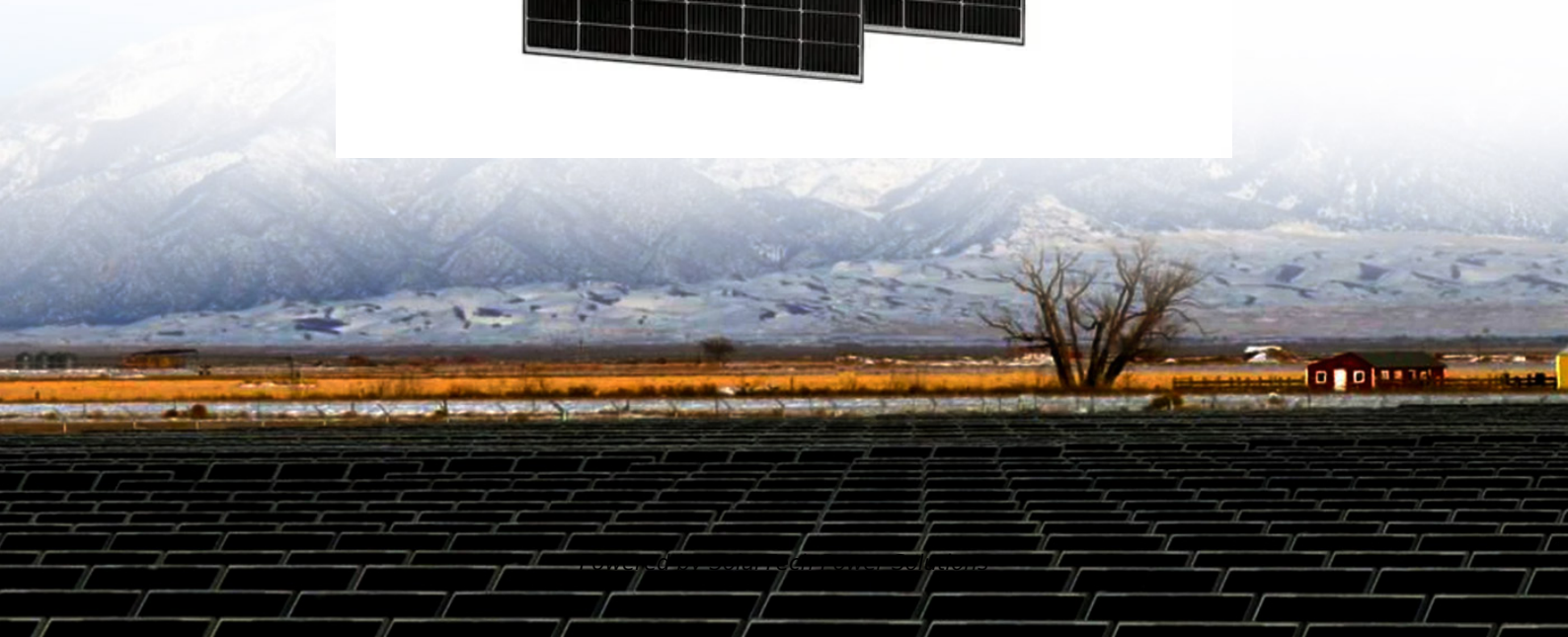
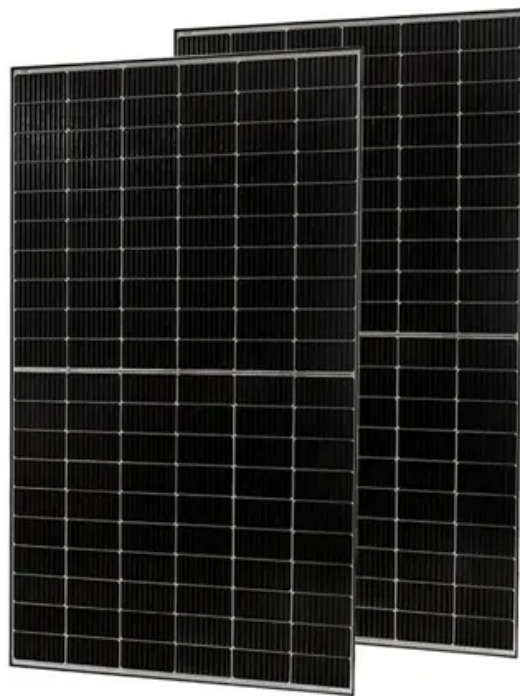


SolarTech Power Solutions

What are the wind power batteries for communication base stations



Overview

The most commonly used batteries include lead-acid, lithium-ion, nickel-cadmium, and nickel-metal hydride batteries, each offering unique advantages suited to different operational needs.

What are the wind power batteries for communication base stations

Contact Us

For catalog requests, pricing, or partnerships, please visit:
<https://zegrzynek.pl>