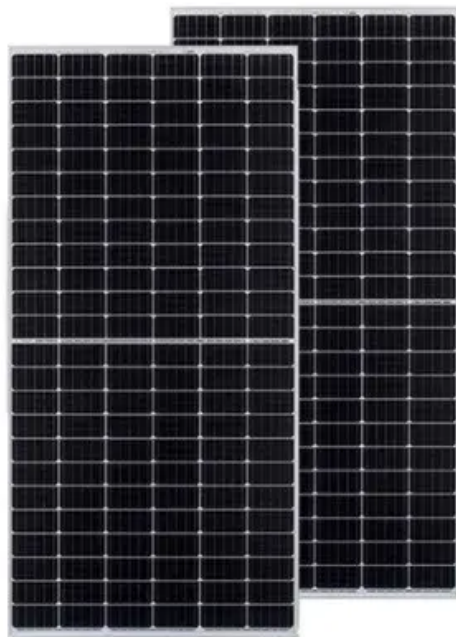


SolarTech Power Solutions

What is the voltage of each string of the inverter



Overview

What is the operating voltage range for a string inverter?

The MPPT operating voltage range for most string inverters is between 80V and 600V, depending on the inverter make and model. The voltage range for Solar MPPT charge controllers is generally much lower and varies from 24V up to 250V. However, several high-voltage models are available which operate up to 600V.

What is a string solar inverter?

The typical string inverter will have multiple strings of PV modules connected to it. Consequently, it will have multiple inputs for these connections. Some inverters are designed with just one input and are built for small solar PV systems. These are sometimes called single-string solar inverters. A multi-string solar inverter has multiple inputs.

How many volts does an inverter have?

I would say 90v for EACH MPPT input, separately. So if your inverter has only one MPPT input, that's 90v. If your inverter has two or more MPPT inputs, that's 90v for each one. Refer to your inverter's user manual, it should state this. Thanks meetyg. Not brought an inverter yet. Trying to get an understanding how things work together. Not here.

Can a string inverter be used with a battery?

These inverters are often used with batteries to store power for later use. Solar inverters are generally efficient, especially when fitted with MPPT. However, for the efficiency to be realized when using a string inverter, solar panels in each string must receive sunlight, or the string or output will be reduced.

How many strings can be connected to a solar inverter?

Here are the results we calculated: This inverter has 2 MPPT trackers, so a

total of 2 strings can be connected to the inverter. We know that there can only be 13 modules maximum installed. We can have one MPPT with 6 modules in a string and the other at 7 modules in a string. Check out UpTop Solar String Sizing Tool that does this for you!.

How does a string inverter work?

Most modern string inverters have a multiple power point tracking (MPPT) that operates within a specific voltage range. Checking the minimum voltage does two things: Checking the maximum voltage does two things: Checking the maximum Isc or maximum current does one thing: Checking the maximum connected power is below the inverter's max.

What is the voltage of each string of the inverter

Contact Us

For catalog requests, pricing, or partnerships, please visit:
<https://zegrzynek.pl>